



THE FARM UGANDA

CULTIVATING AGRI BUSINESS



2019
COMPANY PROFILE
www.farmuganda.com



@thefarmuganda



WHO WE ARE

The Farm Uganda is a community based agri business farm that specialises in animal husbandry, crop production and tractor hire services. It was started as Way to farm ltd in 2015 and was later rebranded & registered as The Farm Uganda Ltd. Many individuals and groups from several countries have generously contributed to making “The Farm Uganda” what it is today. These include; Paul Milligani, Tricord Global, Charis Bible College Business school, Tony Elemulu Foundation, Glo Trans among others. The farm currently employs 12 full time staff and over 50 community members who participate in various on-farm agronomic activities during particular seasons in the production cycle

Our Vision

To be Uganda's Leading agribusiness farm focusing on value addition and in offering affordable, mechanised agricultural equipment at the small and medium scale farmers in order to increase agricultural production in the country.

Our Mission

To improve the quality of life of people through production, diversification and Mechanisation of farming.

Our Principles

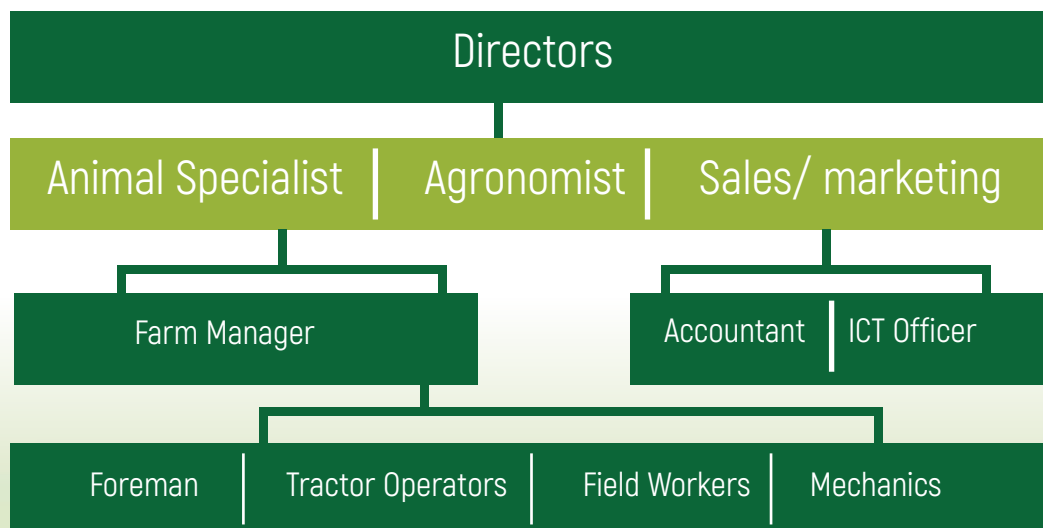
- 1) Integrity
- 2) Fairness
- 3) Objectivity
- 4) Responsibility.
- 5) Community Engagement

Our Objectives

- 1) To provide high quality, appropriate, affordable and conveniently accessible services to our farmers and customers
- 2) To avail market opportunities for farm produce for communities where we operate
- 3) To add value to locally available raw materials to enhance our competitiveness
- 4) To create business and employment opportunities to communities especially the youth
- 5) To provide quality farm inputs to our farmers for enhanced production
- 6) To raise and grow a sustainable and credible company able to deliver its mandate



COMPANY ORGANOGRAM





CORE ACTIVITIES

AND CONSULTANCY





SOCIAL CORPORATE RESPONSIBILITIES

Road maintenance

Community trainings

Field days

Community out reaches

Offering Employment to community members

Renting farmland to those without land





DISCIPLESHIP EVANGELISM

Through partnership with Andrew Wammack Ministries Uganda, we are doing Discipleship Evangelism programme with our employees and the immediate community members. Robert Kalyesubula a student at CBC and an employee of “The Farm Uganda Ltd” is the programme leader.





OUR PARTNERS



TRICORD GLOBAL



THE TONY ELUMELU
FOUNDATION

TONY ELEMULU FOUNDATION



CHARIS BIBLE COLLEGE



GLO TRANS FINANCIAL SERVICES



OUR CLIENTS



SEROMA

Amsusts Agro

**KARIS
FARM**



**HUNDREDS
OF SMALL HOLDER
FARMERS**

(KASANDA, NWOYA & AMURU)

**BUGANDA
CO-OPERATIVE
SOCIETY
BUIKWE**



TRACTOR HIRE

We use world's modern reputable brands (DEUTZ FAHR 2016) tractors from Germany.

It takes 15 people to plough an acre a day while a tractor does the same work under an hour.

We currently have a fleet of three tractors each with a capacity of ploughing a maximum of 15 acres a day.





IMPLEMENTS

We use state of the art ploughs, tractor trailer, Harrows & Planters. Our ploughs (Balden & Tatu) are designed to open new, rocky and rooty fields

Mersey Ferguson planter(MF407) is better suited for uneven fields. It's precise and requires minimal tilling.





IMPLEMENTS

A 20 disc harrow for leveling seedbeds before planting. We currently have field king & Mersey ferguson harrows.





UBB 913L

PLOUGHING

TATU/ BALDEN
OPENING NEW FIELDS IN ANAKA -NWOYA



TRACTOR IN OPERATION




GALLERY APPENDICES



GALLERY APPENDICES





Field Office: Kasanda-Bukuya
Operational Office: P.O.Box 71750, Kampala
Tel: +256 777 949 545, +256 703 008 436

Web: www.farmuganda.com, Email: info@farmuganda.com

   **@thefarmuganda**